

Belgian Cancer Registry



Cancer Fact Sheet **Bladder Cancer**

ICD10 : C67

Belgium 2021

1. Cancer Incidence

1.1. Number of new diagnoses and incidence rates

Table 1: Bladder Cancer: Average age at diagnosis, number of new cancer diagnoses (N), crude rate (CR), age-standardised incidence rates (ESR and WSR) and cumulative risk by sex and region, 2021

Males	Age (years)	N	CR	ESR	WSR	CRi
Belgium	73.9	2,096	36.9	23.7	15.0	1.70
Brussels-Capital Region	72.9	136	22.7	22.1	14.1	1.57
Flemish Region	74.6	1,277	38.8	22.5	14.2	1.63
Walloon Region	72.6	683	38.3	26.2	16.8	1.86

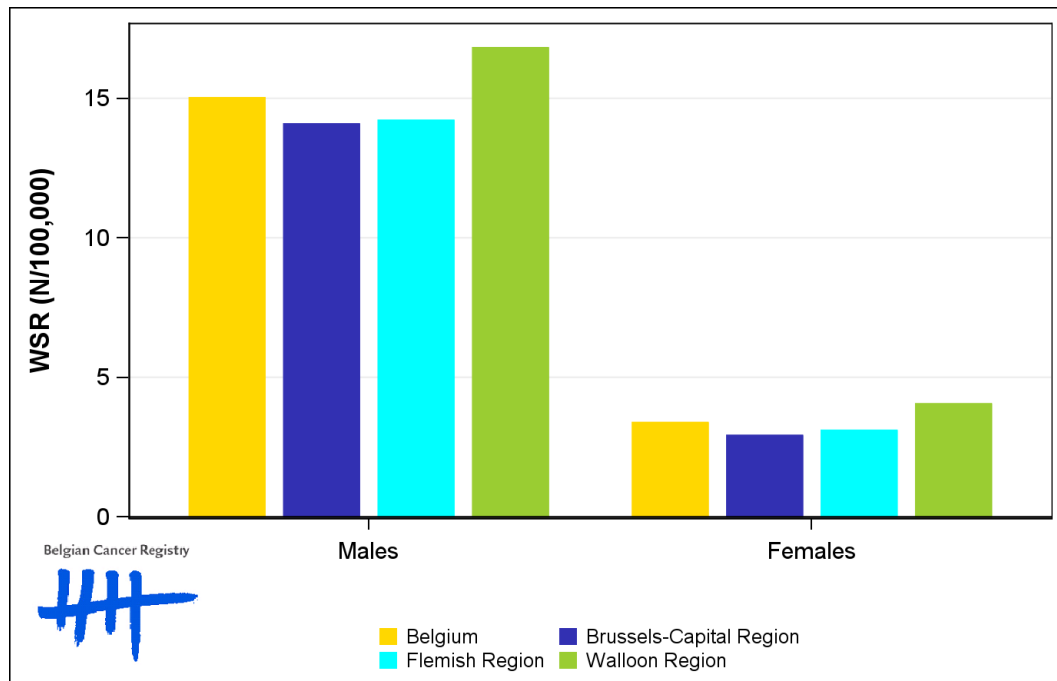
Females	Age (years)	N	CR	ESR	WSR	CRi
Belgium	75.1	573	9.8	5.2	3.4	0.40
Brussels-Capital Region	78.1	46	7.4	4.7	2.9	0.28
Flemish Region	75.8	320	9.5	4.8	3.1	0.39
Walloon Region	73.4	207	11.1	6.3	4.1	0.46

CR=Crude (all ages) Rate (N/100,000 person-years)
 ESR (1976)=Age-Standardised Rate, using the European Standard Population (N/100,000 person-years)
 WSR=Age-Standardised Rate, using the World Standard Population (N/100,000 person-years)
 CRi=Cumulative Risk for 0-74 years (%)

Belgian Cancer Registry



Figure 1: Bladder Cancer: Age-standardised incidence rates by sex and region, 2021



1.2. Age-specific incidence rates

Table 2: Bladder Cancer: Age-specific incidence rates, crude rate (CR) and age-standardised incidence rates (ESR and WSR) by sex, Belgium 2021

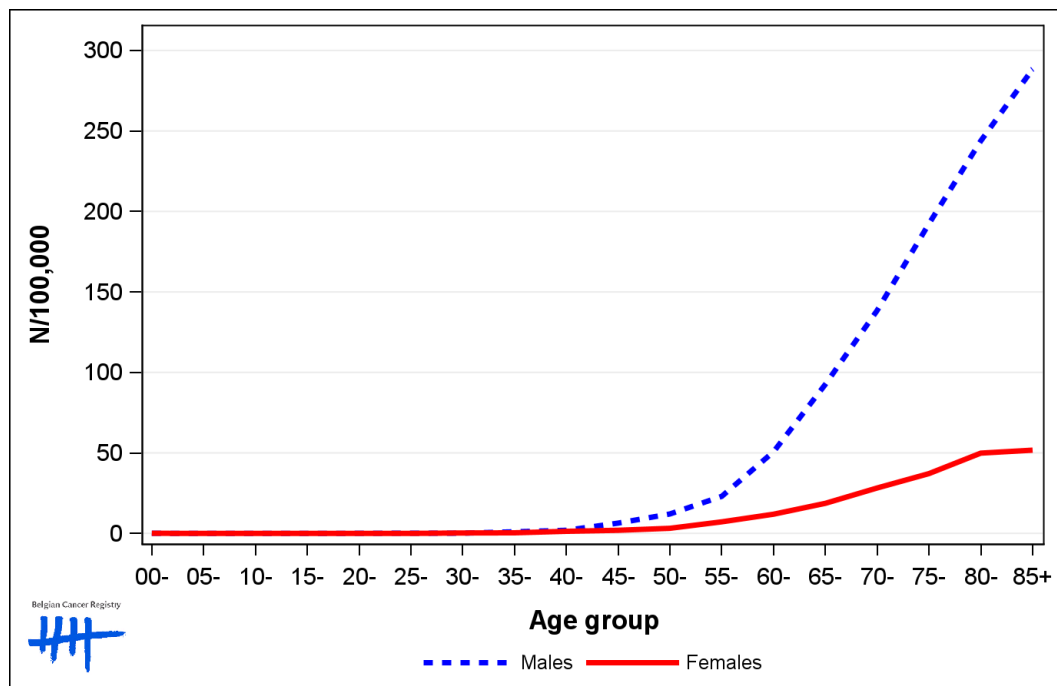
	00-	05-	10-	15-	20-	25-	30-	35-	40-	45-	50-	55-	60-	65-	70-	75-	80-	85+	CR	ESR	WSR
Males	0.0	0.0	0.0	0.0	0.0	0.3	0.5	0.3	1.3	8.4	9.5	25.8	54.5	96.9	145.3	206.7	261.8	297.6	36.9	23.7	15.0
Females	0.0	0.0	0.0	0.0	0.0	0.0	0.5	0.3	1.1	1.9	4.1	6.2	11.0	19.9	35.4	42.2	45.4	60.3	9.8	5.2	3.4

CR=Crude (all ages) Rate (N/100,000 person-years)

ESR (1976)=Age-Standardised Rate, using the European Standard Population (N/100,000 person-years)

WSR=Age-Standardised Rate, using the World Standard Population (N/100,000 person-years)

Figure 2: Bladder Cancer: Age-specific incidence rates by sex, 2017-2021



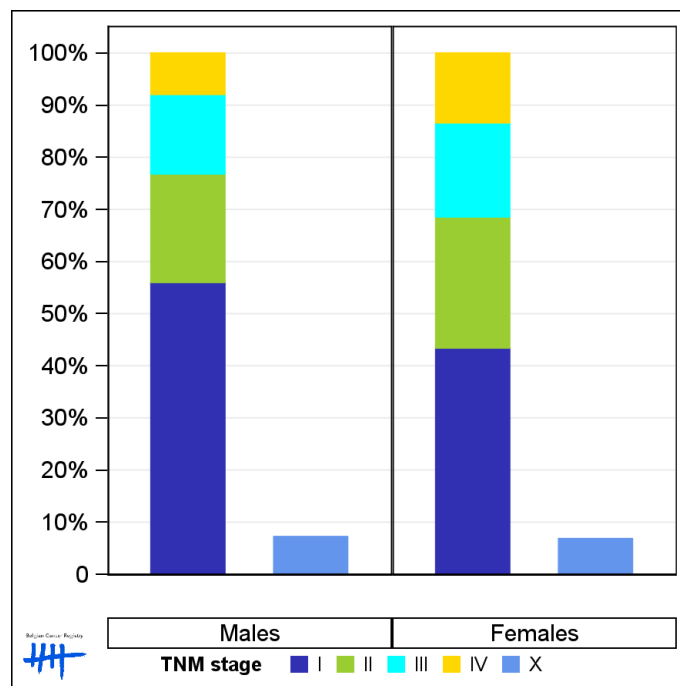
1.3. Combined stage

Table 3: Bladder Cancer: Distribution of combined stage by sex, Belgium 2021

	Stage I	Stage II	Stage III	Stage IV	Stage X	Stage NA	Total
Males							
N	1,087	404	296	153	151	5	2,096
%	51.9	19.3	14.1	7.3	7.2	0.2	100
Females							
N	231	134	96	71	39	2	573
%	40.3	23.4	16.8	12.4	6.8	0.3	100

Staging according to the TNM 8th edition (Ref: Brierley JD, Gospodarowicz MK, Wittekind Ch. TNM classification of malignant tumours, UICC 8th edition)
 Combined TNM stage : compilation of pathological (pTNM) and clinical (cTNM) stage. pTNM prevails over cTNM, except when cTNM stage is IV
 Stage X: diagnoses with an unknown stage
 Stage NA: diagnoses with a histological diagnosis where no stage can be evaluated (Not Applicable)

Figure 3: Bladder Cancer: Bar chart of known combined stage by sex, Belgium 2021



1.4. Trends in incidence

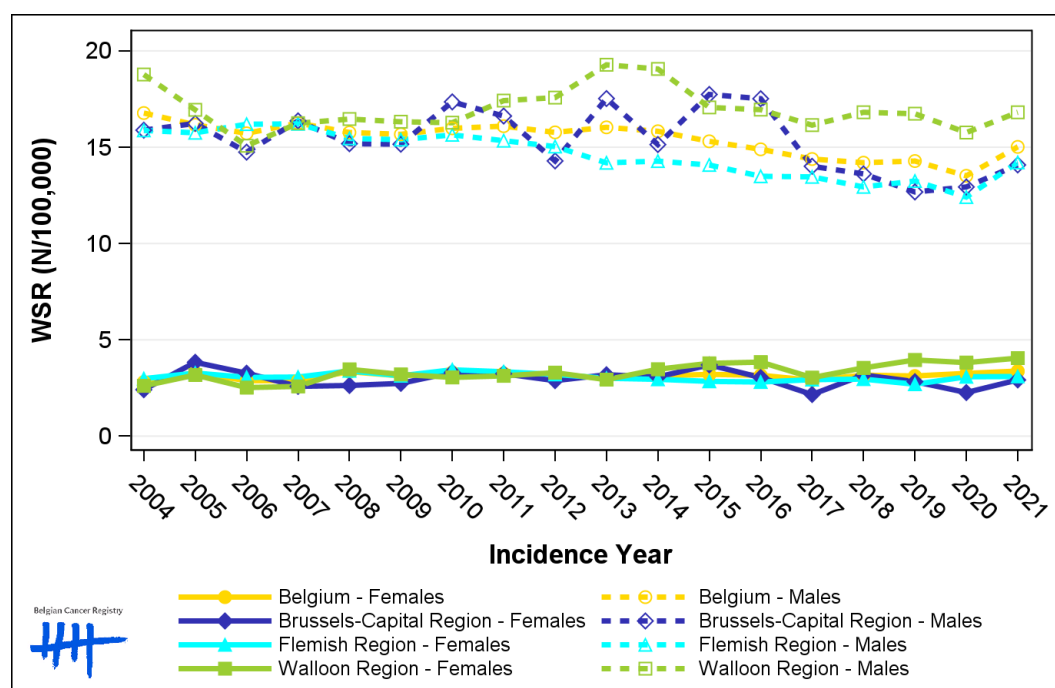
Table 4: Bladder Cancer: Age-standardised incidence rates (WSR) and average annual percentage change (AAPC) by incidence year, sex and region

Males	2007	2008	2009	2010	2011	2012	2013	2014	2015	2016	2017	2018	2019	2020	2021	AAPC	95% CI
Belgium	16.3	15.8	15.7	16.0	16.1	15.8	16.0	15.8	15.3	14.9	14.4	14.2	14.3	13.5	15.0	-0.6	[-1.0; -0.2]
Brussels-Capital Region	16.4	15.2	15.2	17.4	16.6	14.3	17.5	15.1	17.7	17.5	14.0	13.6	12.7	12.9	14.1	-1.5	[-2.6; -0.5]
Flemish Region	16.2	15.5	15.4	15.6	15.3	15.0	14.2	14.3	14.1	13.5	13.5	12.9	13.2	12.4	14.2	-1.5	[-2.0; -1.1]
Walloon Region	16.2	16.5	16.3	16.3	17.4	17.6	19.3	19.1	17.1	17.0	16.1	16.8	16.7	15.8	16.8	0.1	[-0.5; 0.6]

Females	2007	2008	2009	2010	2011	2012	2013	2014	2015	2016	2017	2018	2019	2020	2021	AAPC	95% CI
Belgium	2.9	3.3	3.1	3.3	3.3	3.2	3.0	3.1	3.2	3.2	2.9	3.2	3.1	3.3	3.4	0.2	[-0.4; 0.8]
Brussels-Capital Region	2.6	2.6	2.7	3.3	3.2	2.9	3.2	3.1	3.7	3.0	2.2	3.2	2.8	2.3	2.9	-0.4	[-2.1; 1.4]
Flemish Region	3.1	3.4	3.1	3.4	3.3	3.2	3.0	2.9	2.8	2.8	2.9	3.0	2.7	3.1	3.1	-0.3	[-0.9; 0.4]
Walloon Region	2.6	3.5	3.2	3.0	3.1	3.3	2.9	3.5	3.8	3.8	3.0	3.5	4.0	3.8	4.1	2.1	[0.9; 3.3]

WSR=Age-Standardised Rate, using the World Standard Population (N/100,000 person-years)
 AAPC = Average Annual Percentage Change over the 2007-2021 period

Figure 4: Bladder Cancer: Age-standardised incidence rates (WSR) by incidence year, sex and region



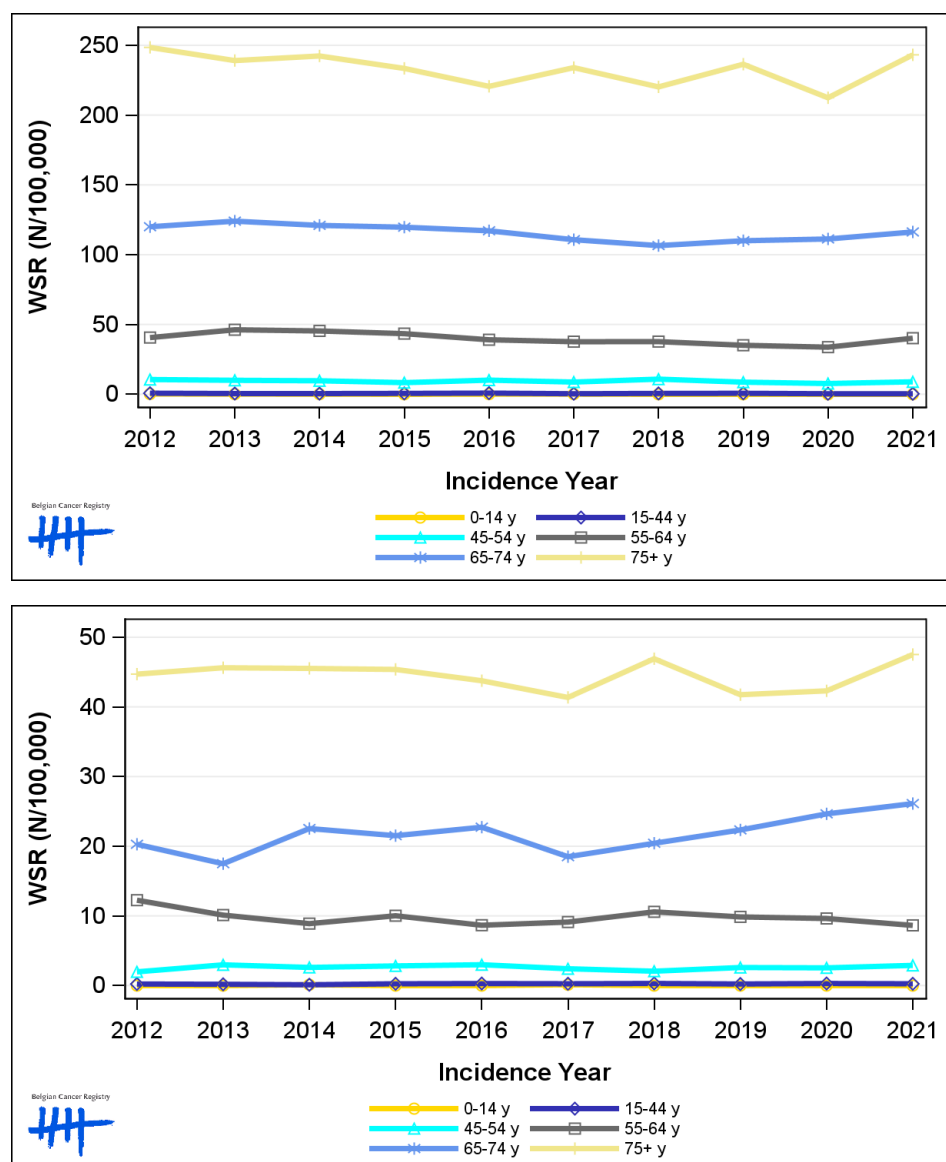
1.5. Incidence by broad age groups

Table 5: Bladder Cancer: Number of new diagnoses and age-standardised incidence rates (WSR) by broad age groups and incidence year by sex, Belgium

	N										WSR									
	2012	2013	2014	2015	2016	2017	2018	2019	2020	2021	2012	2013	2014	2015	2016	2017	2018	2019	2020	2021
Males																				
All ages	1,853	1,886	1,911	1,885	1,860	1,870	1,856	1,947	1,854	2,096	15.8	16.0	15.8	15.3	14.9	14.4	14.2	14.3	13.5	15.0
0-14 y	2	1	1	0	1	1	0	0	0	0	0.2	0.1	<0.1	0.0	0.1	0.1	0.0	0.0	0.0	0.0
15-44 y	21	14	13	17	22	10	16	17	10	9	0.8	0.5	0.5	0.6	0.8	0.4	0.6	0.7	0.4	0.3
45-54 y	88	83	82	71	86	73	92	72	63	70	10.6	10.0	9.7	8.3	10.1	8.7	10.8	8.7	7.7	8.9
55-64 y	269	309	306	297	273	267	269	255	250	302	40.6	46.2	45.4	43.4	39.0	37.7	37.7	35.1	33.7	40.2
65-74 y	548	576	576	585	590	583	583	620	633	682	120.0	124.0	121.0	119.7	117.1	110.7	106.5	110.0	111.3	116.3
75+ y	925	903	933	915	888	936	896	983	898	1,033	248.5	239.1	242.4	233.5	220.6	234.0	220.2	236.5	212.4	243.2
Females																				
All ages	494	481	507	511	507	468	524	514	528	573	3.2	3.0	3.1	3.2	3.2	2.9	3.2	3.1	3.3	3.4
0-14 y	0	0	1	0	0	1	0	0	0	0	0.0	0.0	0.1	0.0	0.0	0.1	0.0	0.0	0.0	0.0
15-44 y	6	5	3	7	7	7	8	6	8	7	0.2	0.2	0.1	0.3	0.3	0.3	0.3	0.2	0.3	0.3
45-54 y	16	25	22	23	25	20	17	20	20	23	2.0	3.0	2.6	2.8	3.0	2.4	2.1	2.6	2.5	2.9
55-64 y	83	69	62	70	62	67	78	73	73	66	12.3	10.1	8.9	10.0	8.7	9.1	10.6	9.9	9.6	8.6
65-74 y	109	90	121	116	126	107	123	137	154	170	20.3	17.5	22.5	21.5	22.7	18.5	20.4	22.3	24.6	26.1
75+ y	280	292	298	295	287	266	298	278	273	307	44.7	45.6	45.5	45.4	43.8	41.4	46.9	41.8	42.3	47.5

N=Number of invasive tumours
WSR=Age-Standardised Rate, using the World Standard Population (N/100,000 person-years)

Figure 5: Bladder Cancer: Age-standardised incidence rates (WSR) versus incidence year by broad age groups for males (top) and females (bottom), Belgium



2. Relative survival

Table 6: Bladder Cancer: 5-year relative survival proportion by sex, age group and region, Belgium 2017-2021

	5-year relative survival 2017-2021 (%)					
	Males			Females		
	N at risk	estimate	95% CI	N at risk	estimate	95% CI
Overall	9,586	59.8	[58.2, 61.5]	2,597	48.3	[45.4, 51.2]
Age group						
15-59 years	881	75.1	[71.3, 78.5]	276	60.6	[53.7, 66.9]
60-74 years	3,977	65.8	[63.6, 67.9]	900	63.3	[58.9, 67.4]
75+ years	4,729	50.8	[48.0, 53.6]	1,421	34.6	[30.4, 39.1]
Region						
Brussels-Capital Region	644	57.1	[50.8, 63.2]	180	44.4	[33.3, 55.7]
Flemish Region	5,718	61.2	[59.1, 63.3]	1,497	50.7	[46.9, 54.4]
Walloon Region	3,224	57.9	[55.0, 60.7]	920	44.9	[39.8, 50.0]

Figure 6: Bladder Cancer: relative survival proportion by sex, Belgium 2017-2021

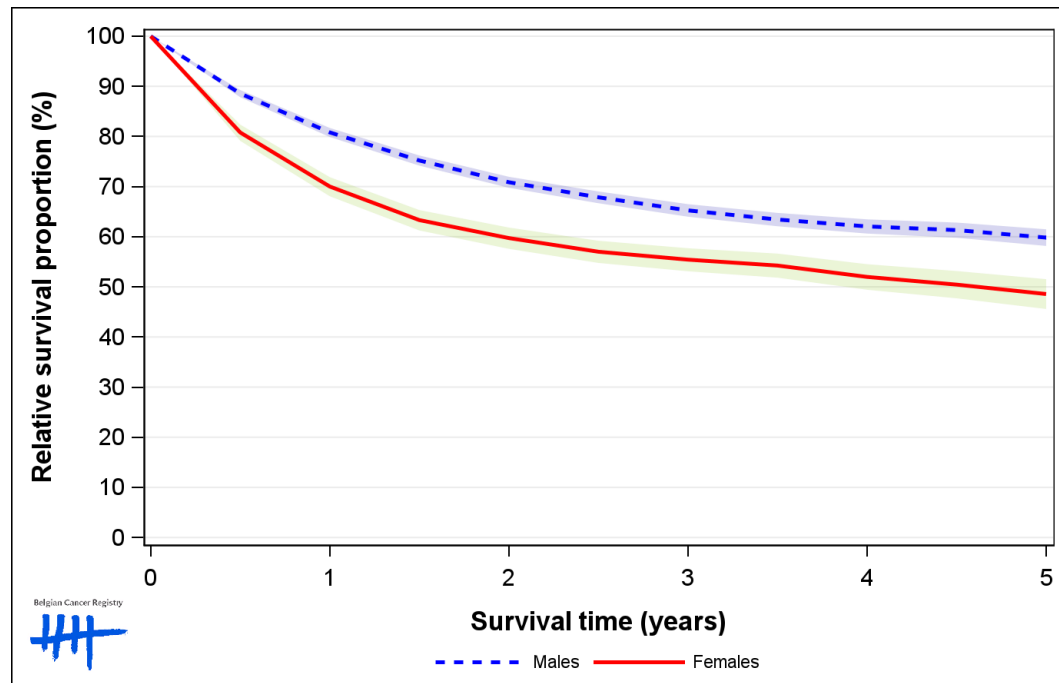


Figure 7: Bladder Cancer: relative survival proportion by age group in males, Belgium 2017-2021

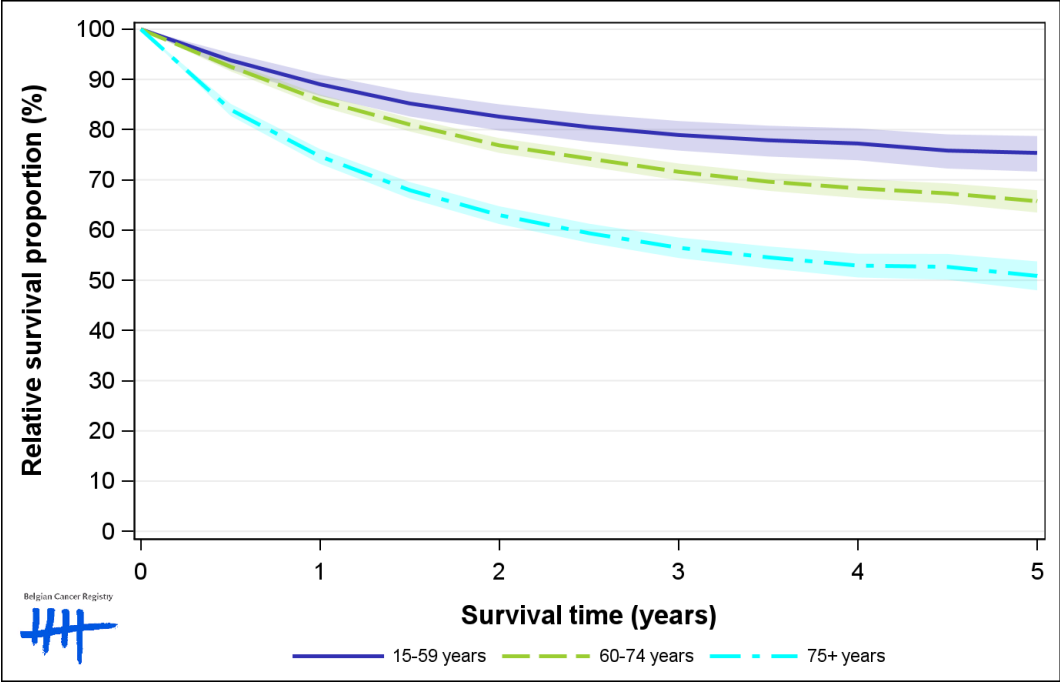


Figure 8: Bladder Cancer: relative survival proportion by age group in females, Belgium 2017-2021

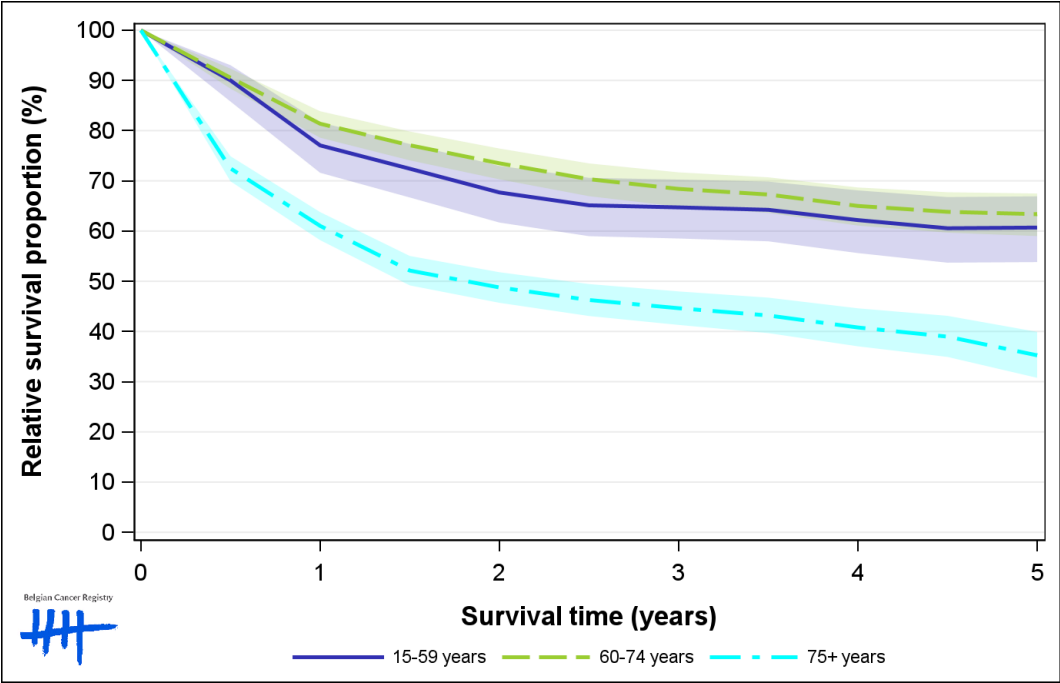


Figure 9: Bladder Cancer: relative survival proportion by region in males, Belgium 2017-2021

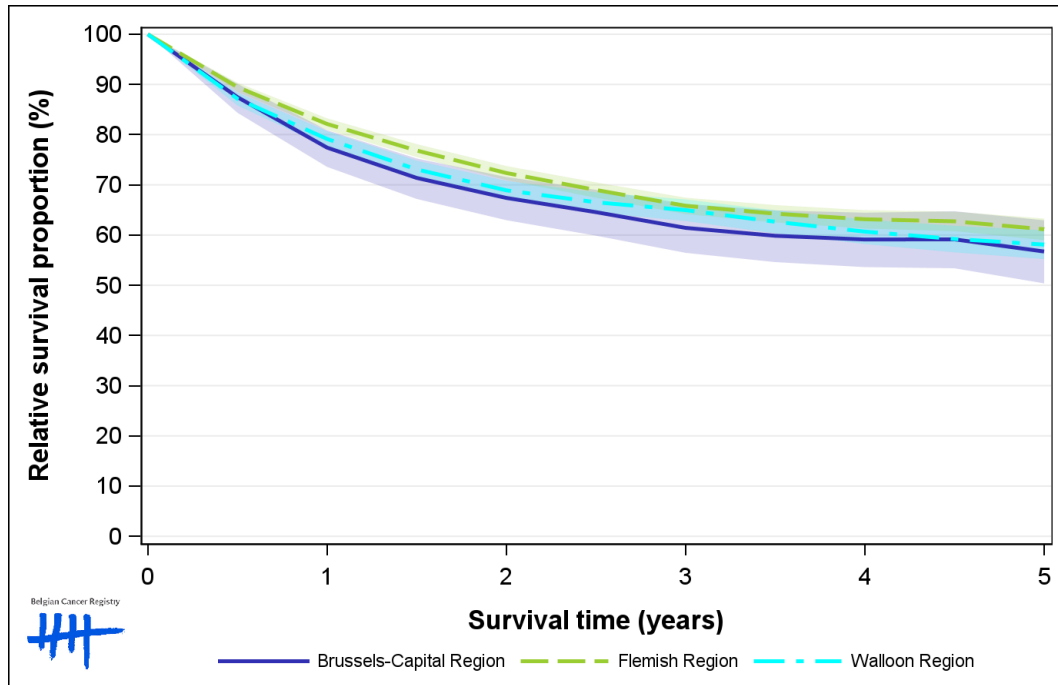


Figure 10: Bladder Cancer: relative survival proportion by region in females, Belgium 2017-2021

