



Belgian Cancer Registry



Cancer Fact Sheet **Liver Cancer**

ICD10 : C22

Belgium 2020

1. Cancer Incidence

1.1. Number of new diagnoses and incidence rates

Table 1: Liver cancer: Average age at diagnosis, number of new cancer diagnoses (N), crude rate (CR), age-standardised incidence rates (ESR and WSR) and cumulative risk by sex and region, 2020

Males	Age (years)	N	CR	ESR	WSR	CRi
Belgium	68.4	769	13.6	9.7	6.7	0.84
Brussels-Capital Region	66.0	66	11.0	11.6	7.9	1.03
Flemish Region	69.3	396	12.1	8.0	5.5	0.67
Walloon Region	67.8	307	17.2	12.8	8.7	1.13

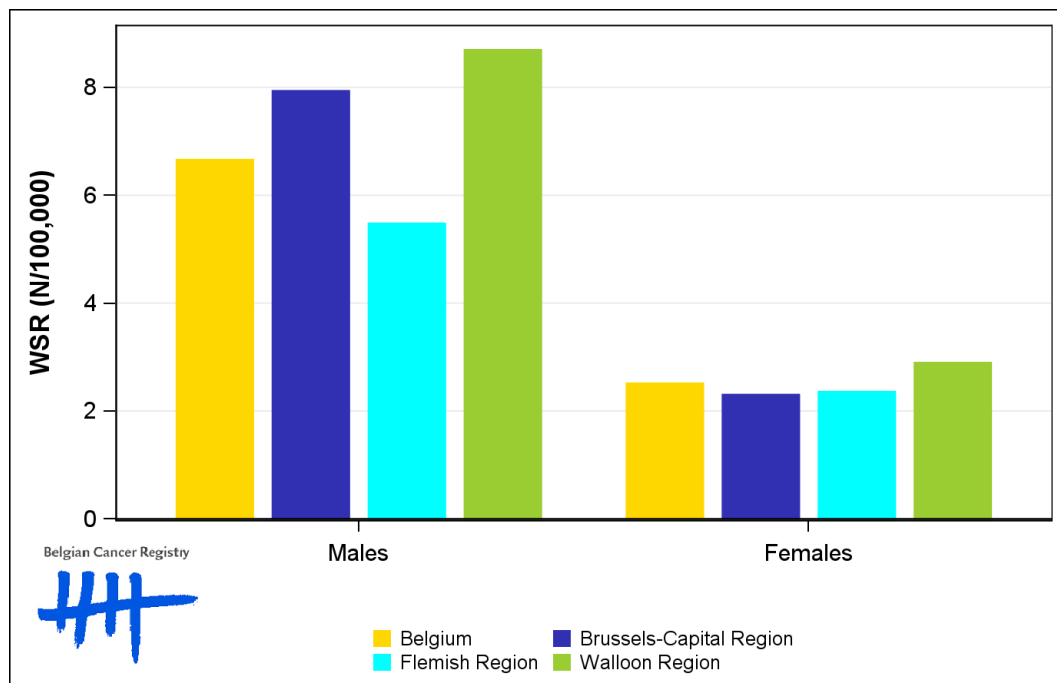
Females	Age (years)	N	CR	ESR	WSR	CRi
Belgium	69.2	327	5.6	3.6	2.5	0.28
Brussels-Capital Region	69.1	25	4.0	3.5	2.3	0.26
Flemish Region	69.8	187	5.6	3.3	2.4	0.25
Walloon Region	68.2	115	6.2	4.0	2.9	0.34

CR=Crude (all ages) Rate (N/100,000 person-years)
 ESR (1976)=Age-Standardised Rate, using the European Standard Population (N/100,000 person-years)
 WSR=Age-Standardised Rate, using the World Standard Population (N/100,000 person-years)
 CRi=Cumulative Risk for 0-74 years (%)

Belgian Cancer Registry



Figure 1: Liver cancer: Age-standardised incidence rates by sex and region, 2020



1.2. Age-specific incidence rates

Table 2: Liver cancer: Age-specific incidence rates, crude rate (CR) and age-standardised incidence rates (ESR and WSR) by sex, Belgium 2020

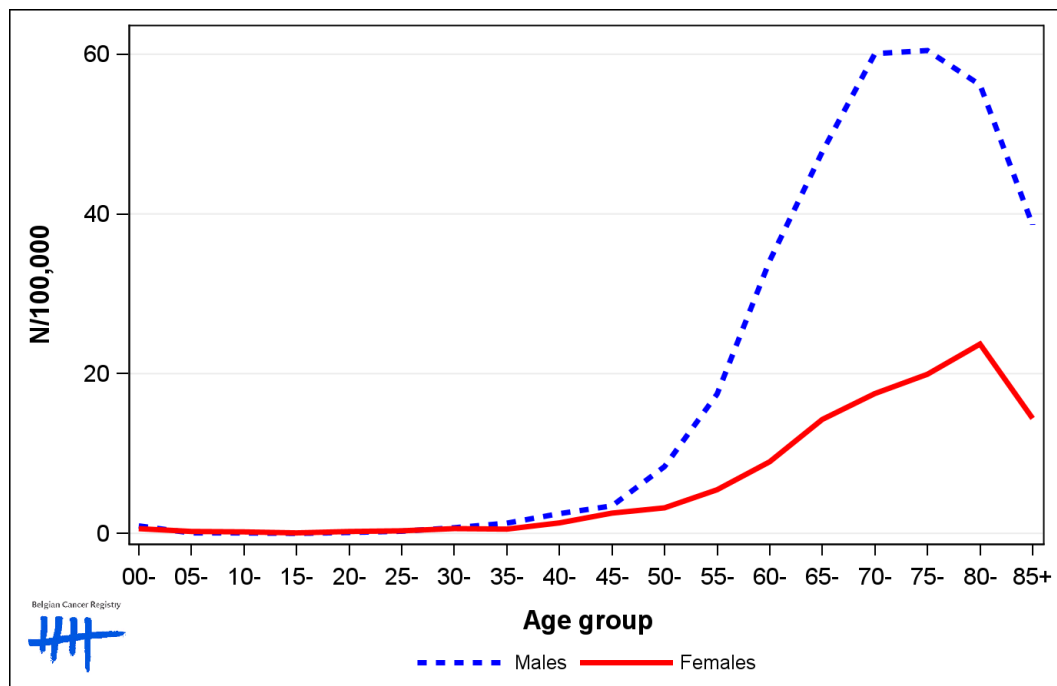
	00-	05-	10-	15-	20-	25-	30-	35-	40-	45-	50-	55-	60-	65-	70-	75-	80-	85+	CR	ESR	WSR
Males	1.0	0.0	0.0	0.0	0.6	0.3	1.3	1.6	1.6	2.3	9.0	16.7	28.6	51.0	55.1	69.7	57.3	37.7	13.6	9.7	6.7
Females	0.3	0.6	0.3	0.3	0.3	0.8	0.5	0.5	1.1	2.4	3.8	7.3	7.6	14.9	15.6	22.6	27.0	17.0	5.6	3.6	2.5

CR=Crude (all ages) Rate (N/100,000 person-years)

ESR (1976)=Age-Standardised Rate, using the European Standard Population (N/100,000 person-years)

WSR=Age-Standardised Rate, using the World Standard Population (N/100,000 person-years)

Figure 2: Liver cancer: Age-specific incidence rates by sex, 2016-2020



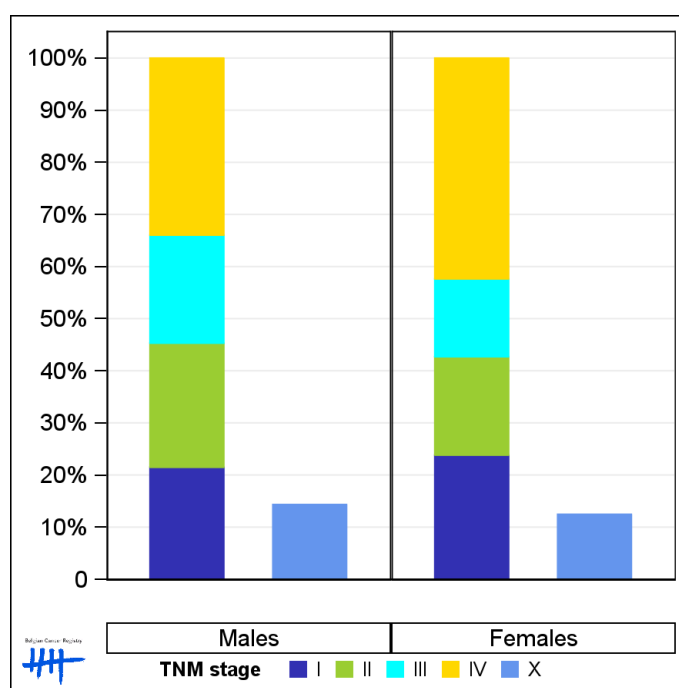
1.3. Combined stage

Table 3: Liver cancer: Distribution of combined stage by sex, Belgium 2020

	Stage I	Stage II	Stage III	Stage IV	Stage X	Stage NA	Total
Males							
N	140	155	135	221	109	9	769
%	18.2	20.2	17.6	28.7	14.2	1.2	100
Females							
N	67	53	42	119	40	6	327
%	20.5	16.2	12.8	36.4	12.2	1.8	100

Staging according to the TNM 8th edition (Ref: Brierley JD, Gospodarowicz MK, Wittekind Ch. TNM classification of malignant tumours, UICC 8th edition)
 Combined TNM stage : compilation of pathological (pTNM) and clinical (cTNM) stage. pTNM prevails over cTNM, except when cTNM stage is IV
 Stage X: diagnoses with an unknown stage
 Stage NA: diagnoses with a histological diagnosis where no stage can be evaluated (Not Applicable)

Figure 3: Liver cancer: Bar chart of known combined stage by sex, Belgium 2020



1.4. Trends in incidence

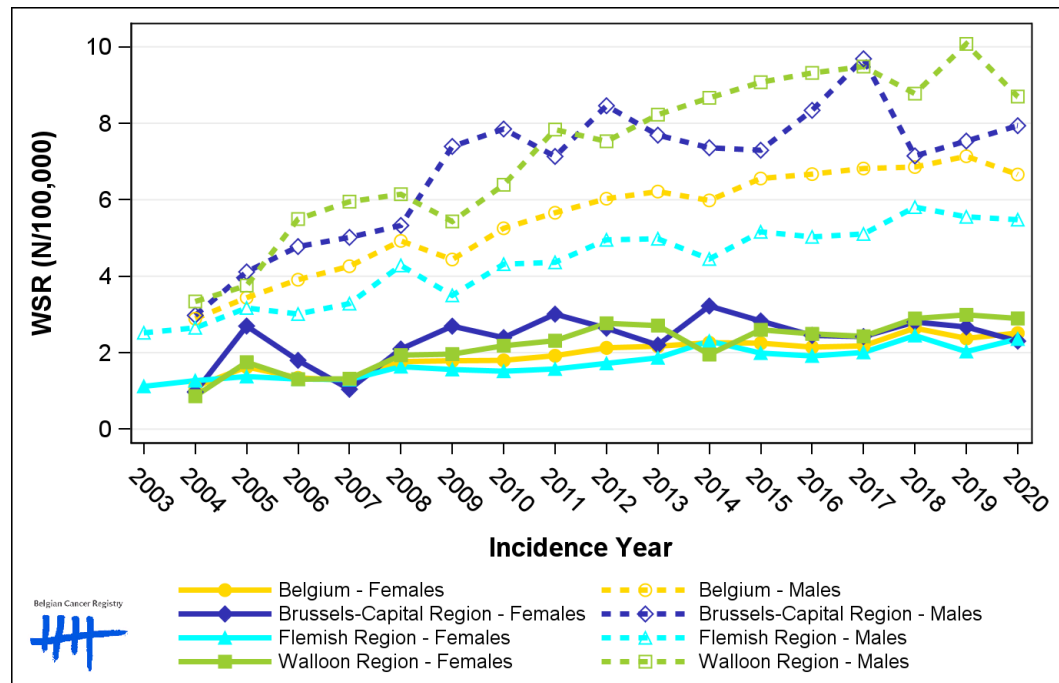
Table 4: Liver cancer: Age-standardised incidence rates (WSR) and average annual percentage change (AAPC) by incidence year, sex and region

Males	2006	2007	2008	2009	2010	2011	2012	2013	2014	2015	2016	2017	2018	2019	2020	AAPC	95% CI
Belgium	3.9	4.3	4.9	4.4	5.3	5.7	6.0	6.2	6.0	6.6	6.7	6.8	6.9	7.1	6.7	4.2	[3.6; 4.8]
Brussels-Capital Region	4.8	5.0	5.3	7.4	7.9	7.1	8.5	7.7	7.4	7.3	8.3	9.7	7.1	7.5	7.9	2.5	[0.7; 4.3]
Flemish Region	3.0	3.3	4.3	3.5	4.3	4.4	5.0	5.0	4.5	5.2	5.0	5.1	5.8	5.6	5.5	4.2	[3.2; 5.2]
Walloon Region	5.5	5.9	6.1	5.4	6.4	7.8	7.5	8.2	8.7	9.1	9.3	9.5	8.8	10.1	8.7	3.8	[2.9; 4.8]

Females	2006	2007	2008	2009	2010	2011	2012	2013	2014	2015	2016	2017	2018	2019	2020	AAPC	95% CI
Belgium	1.3	1.3	1.8	1.8	1.8	1.9	2.1	2.2	2.3	2.3	2.1	2.2	2.6	2.4	2.5	4.5	[3.5; 5.4]
Brussels-Capital Region	1.8	1.0	2.1	2.7	2.4	3.0	2.6	2.2	3.2	2.8	2.5	2.4	2.8	2.7	2.3	2.8	[-0.0; 5.6]
Flemish Region	1.3	1.3	1.6	1.6	1.5	1.6	1.7	1.9	2.3	2.0	1.9	2.0	2.4	2.0	2.4	4.1	[2.9; 5.3]
Walloon Region	1.3	1.3	1.9	2.0	2.2	2.3	2.8	2.7	2.0	2.6	2.5	2.4	2.9	3.0	2.9	4.5	[2.0; 7.1]

WSR=Age-Standardised Rate, using the World Standard Population (N/100,000 person-years)
 AAPC = Average Annual Percentage Change over the 2006-2020 period

Figure 4: Liver cancer: Age-standardised incidence rates (WSR) by incidence year, sex and region



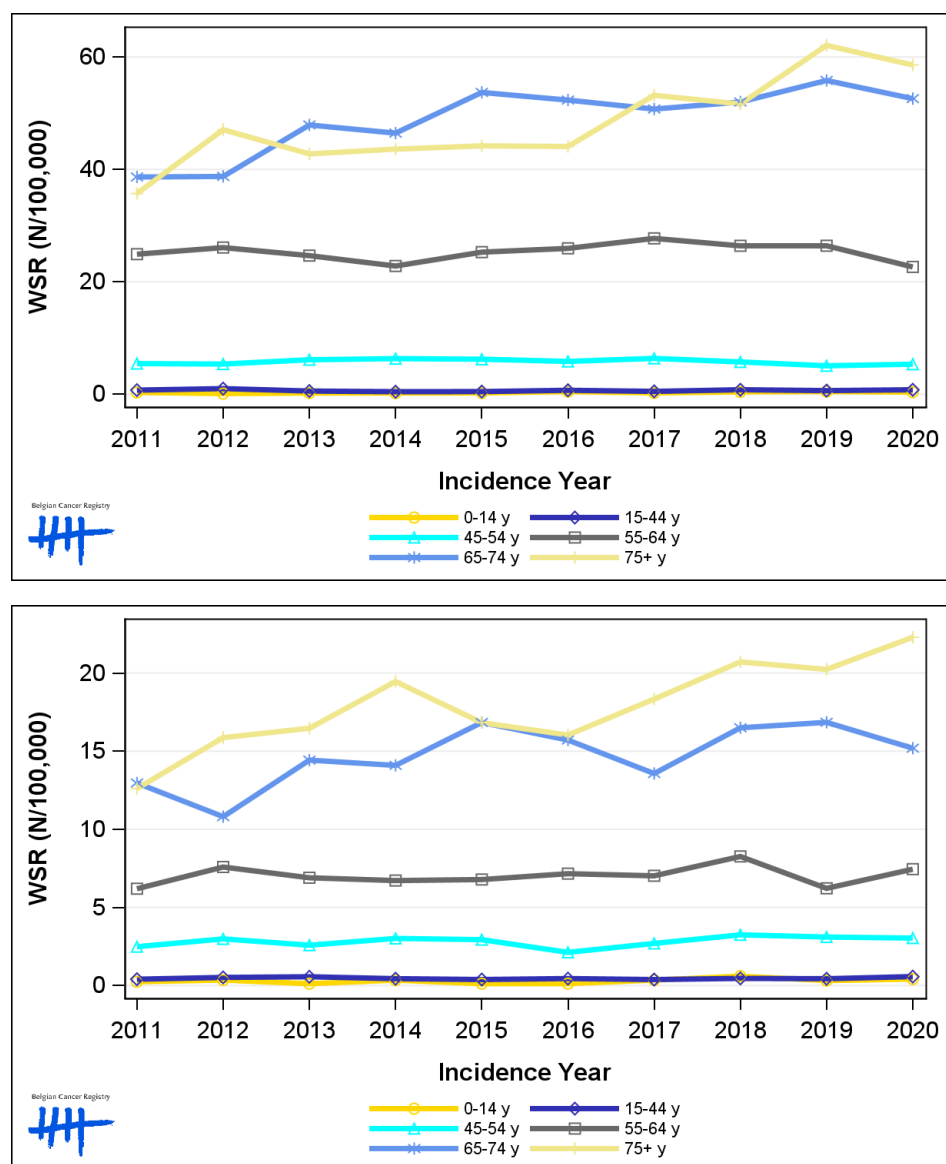
1.5. Incidence by broad age groups

Table 5: Liver cancer: Number of new diagnoses and age-standardised incidence rates (WSR) by broad age groups and incidence year by sex, Belgium

	N										WSR									
	2011	2012	2013	2014	2015	2016	2017	2018	2019	2020	2011	2012	2013	2014	2015	2016	2017	2018	2019	2020
Males																				
All ages	537	597	619	611	672	692	738	750	814	769	5.7	6.0	6.2	6.0	6.6	6.7	6.8	6.9	7.1	6.7
0-14 y	3	1	2	2	2	4	2	4	4	3	0.3	0.1	0.2	0.2	0.2	0.5	0.2	0.4	0.5	0.4
15-44 y	19	26	14	12	12	19	13	21	17	20	0.7	1.0	0.6	0.5	0.5	0.7	0.5	0.8	0.7	0.8
45-54 y	45	45	52	53	51	50	55	48	41	45	5.5	5.4	6.1	6.3	6.2	5.8	6.4	5.7	5.1	5.4
55-64 y	165	175	166	154	173	180	196	190	193	169	24.9	26.1	24.7	22.8	25.3	26.0	27.7	26.4	26.4	22.7
65-74 y	169	173	222	220	262	263	266	282	311	296	38.7	38.8	47.9	46.5	53.7	52.3	50.7	52.0	55.8	52.6
75+ y	136	177	163	170	172	176	206	205	248	236	35.7	47.1	42.8	43.6	44.2	44.1	53.2	51.6	62.1	58.6
Females																				
All ages	211	243	252	274	276	268	274	327	303	327	1.9	2.1	2.2	2.3	2.3	2.1	2.2	2.6	2.4	2.5
0-14 y	2	3	1	3	1	1	3	5	3	4	0.2	0.4	0.1	0.3	0.1	0.1	0.4	0.6	0.3	0.4
15-44 y	10	12	14	11	10	11	9	12	11	13	0.4	0.5	0.6	0.4	0.4	0.4	0.4	0.5	0.4	0.6
45-54 y	20	24	21	25	25	17	22	26	24	24	2.5	3.0	2.6	3.0	2.9	2.1	2.7	3.3	3.1	3.0
55-64 y	42	52	48	46	47	51	51	61	46	57	6.2	7.6	6.9	6.7	6.8	7.2	7.0	8.3	6.2	7.5
65-74 y	65	55	75	75	91	87	78	99	102	93	13.0	10.8	14.4	14.1	16.8	15.7	13.6	16.5	16.9	15.2
75+ y	72	97	93	114	102	101	111	124	117	136	12.6	15.9	16.5	19.5	16.8	16.0	18.3	20.7	20.2	22.3

N=Number of invasive tumours
WSR=Age-Standardised Rate, using the World Standard Population (N/100,000 person-years)

Figure 5: Liver cancer: Age-standardised incidence rates (WSR) versus incidence year by broad age groups for males (top) and females (bottom), Belgium



2. Relative survival

Table 6: Liver cancer: 5-year relative survival proportion by sex, age group and region, Belgium 2016-2020

	5-year relative survival 2016-2020 (%)					
	Males			Females		
	N at risk	estimate	95% CI	N at risk	estimate	95% CI
Overall	3,718	22.5	[20.6, 24.4]	1,470	23.9	[21.1, 26.9]
Age group						
15-59 years	659	30.3	[26.1, 34.7]	273	32.3	[25.7, 39.0]
60-74 years	1,991	24.2	[21.7, 26.8]	614	24.5	[20.4, 28.8]
75+ years	1,068	13.4	[10.2, 17.0]	583	19.0	[14.1, 24.6]
Region						
Brussels-Capital Region	325	23.5	[17.3, 30.3]	136	24.9	[15.9, 35.3]
Flemish Region	1,841	21.8	[19.2, 24.5]	800	23.2	[19.6, 27.0]
Walloon Region	1,552	23.1	[20.3, 26.1]	534	25.0	[20.1, 30.3]

Figure 6: Liver cancer: relative survival proportion by sex, Belgium 2016-2020

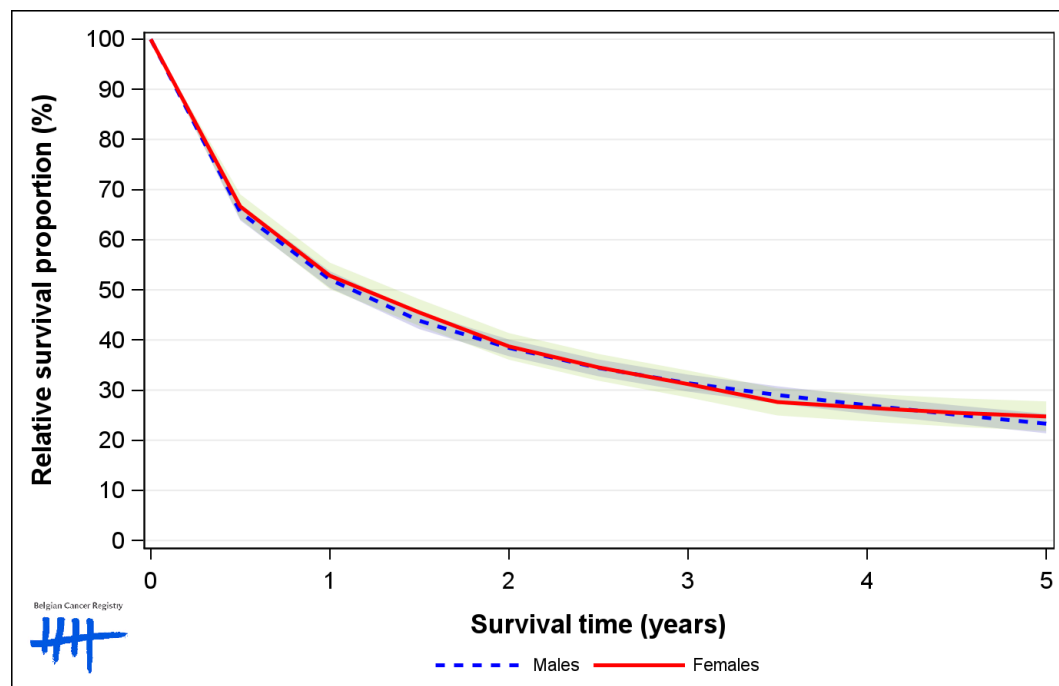


Figure 7: Liver cancer: relative survival proportion by age group in males, Belgium 2016-2020

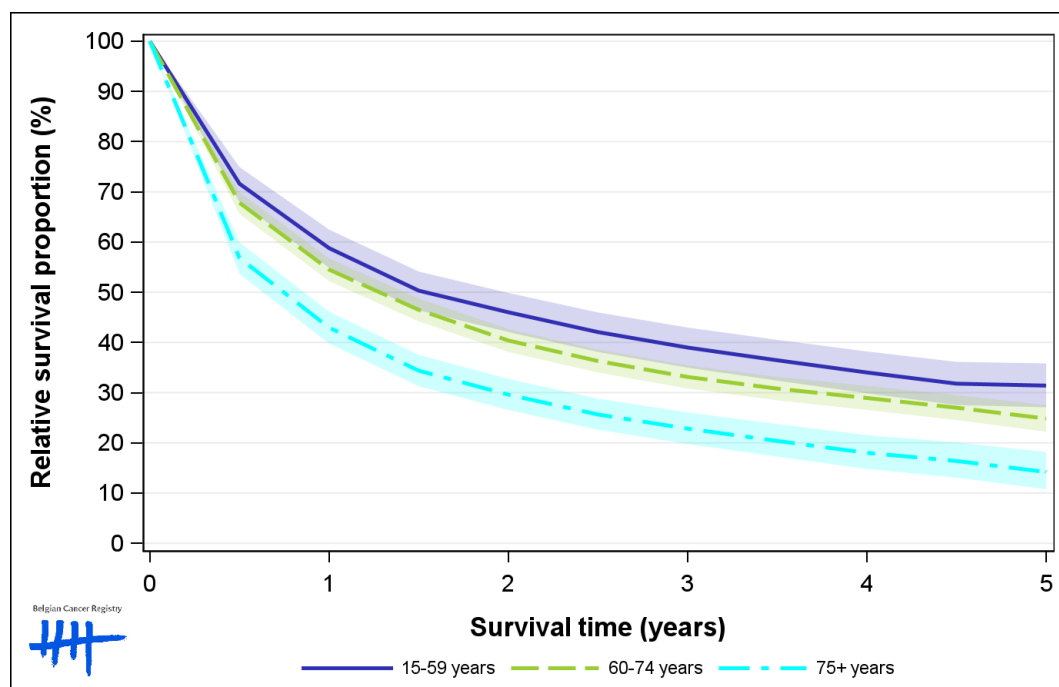


Figure 8: Liver cancer: relative survival proportion by age group in females, Belgium 2016-2020

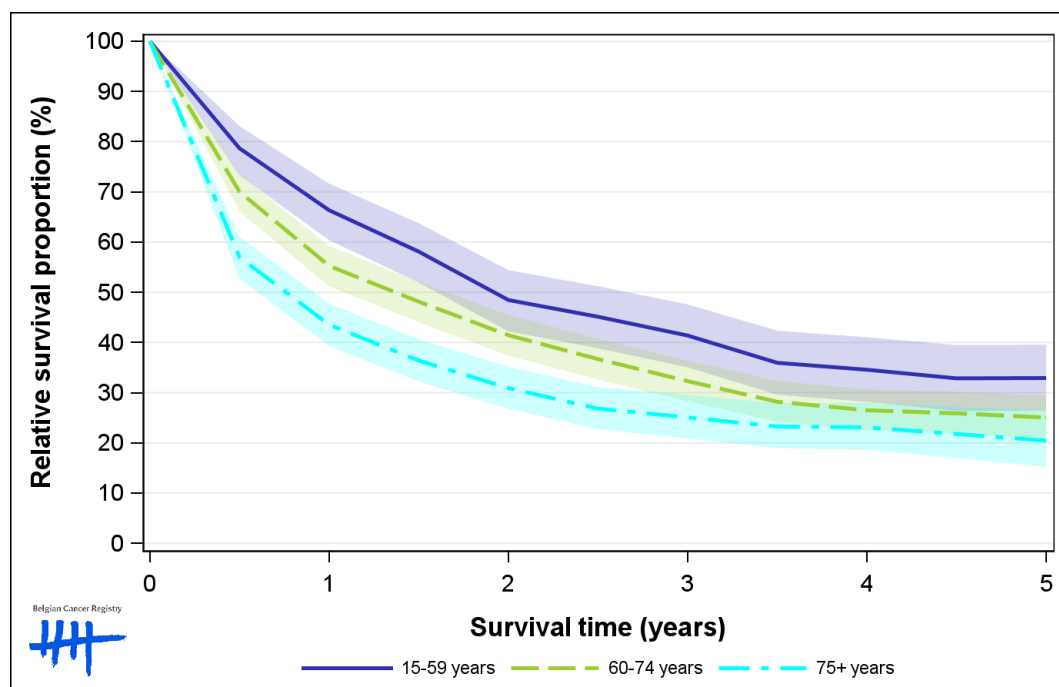


Figure 9: Liver cancer: relative survival proportion by region in males, Belgium 2016-2020

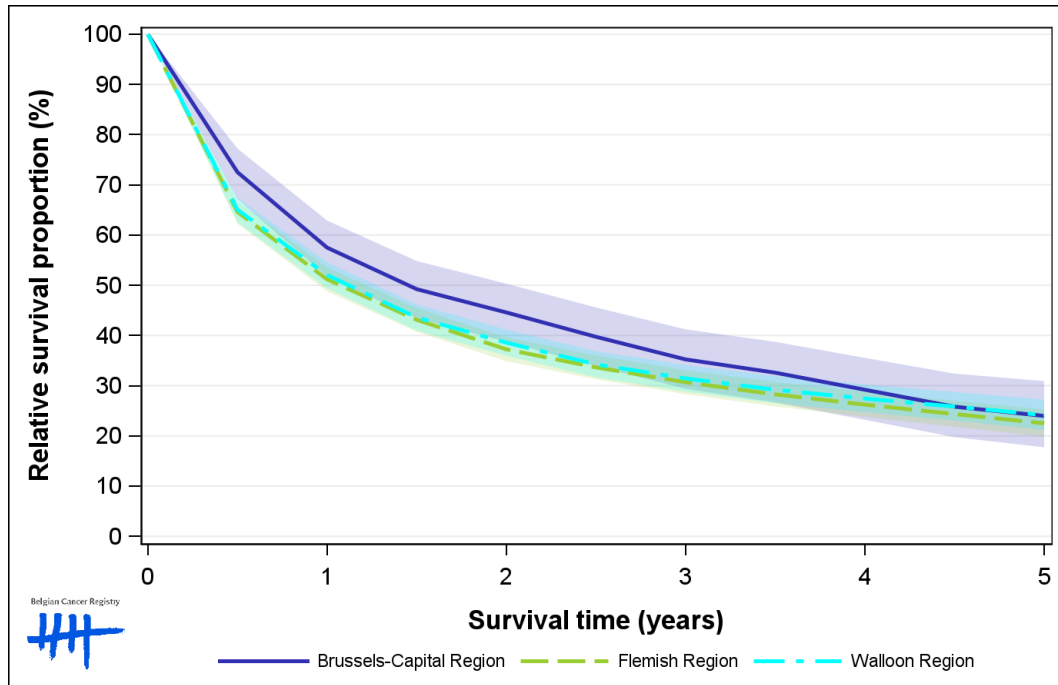


Figure 10: Liver cancer: relative survival proportion by region in females, Belgium 2016-2020

